

THIS IS NOT THE BIGGER PICTURE



STOP CLIMATE CHANGE
PLAY YOUR PART



Climate change is real - not surreal !

There is a 95 % likelihood that global warming is caused by human activities.

long-lived greenhouse gases - CO₂, CH₄, N₂O - further increased from 2005 to 2011. Since starting systematic measurements of CO₂ in 1958, annual mean concentrations have constantly increased and are now 24 % higher than when records started. However, governments continue to support fossil fuels : around the world, governments spent roughly six times more on subsidies for fossil fuels than for renewable energy in 2011. And that's despite many fossil fuel companies being among the largest and most profitable in the world...

The report from IPCC Working group I on climate science published in September 2013 says that the strongest drivers of climate change are greenhouse gases. It confirms that atmospheric concentrations of

[HTTP://STOPCLIMATECHANGE.NET/](http://STOPCLIMATECHANGE.NET/)

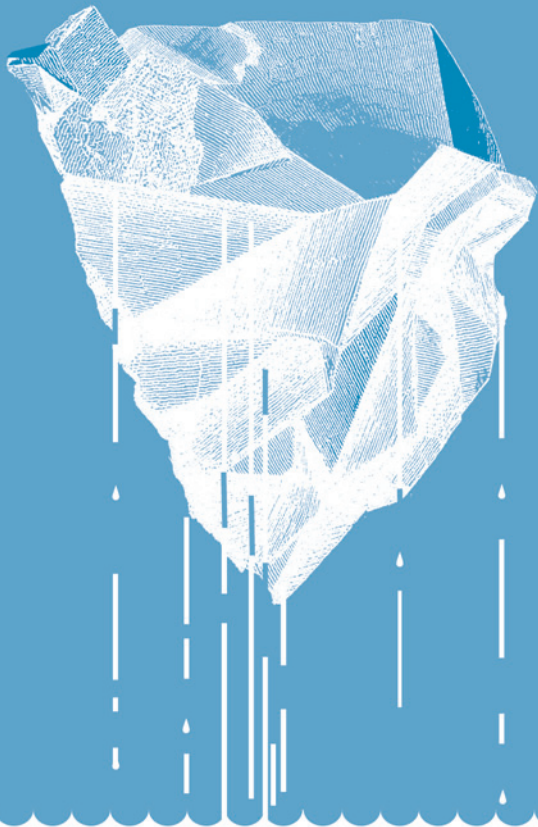


The Greens | European Free Alliance
in the European Parliament



STOP CLIMATE CHANGE
PLAY YOUR PART

THIS IS NOT THE BIGGER PICTURE



STOP CLIMATE CHANGE
PLAY YOUR PART



Climate change is real - not surreal !

An increase in annual mean global surface temperature greater than 2°C above present level will eventually lead to a nearly ice-free Arctic Ocean in late summer.

According to the World Bank's report 'Turn Down the Heat' (Nov 2012), a world in which average temperatures reach 4°C above pre-industrial levels would likely see unprecedented heat waves, severe drought, major flooding and up to a 1 meter rise in sea levels.

[HTTP://STOPCLIMATECHANGE.NET/](http://STOPCLIMATECHANGE.NET/)

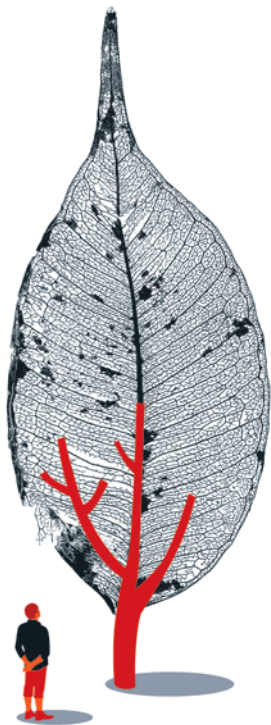


The Greens | European Free Alliance
in the European Parliament



STOP CLIMATE CHANGE
PLAY YOUR PART

THIS IS NOT THE BIGGER PICTURE



STOP CLIMATE CHANGE
PLAY YOUR PART



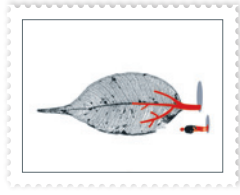
Climate change is real - not surreal !

Tree mortality and forest dieback will occur in many regions in the next 1 to 3 decades. Forest dieback poses serious risks for carbon storage but also for biodiversity, wood production, water quality and accessibility, and economic activity.

Every minute of every day for the past 13 years, the world has lost an area of forest the size of 50 soccer fields. The World Resources Institute has mapped 2 billion hectares of such degraded land – equivalent to twice the size of China – and shown that much of it can be turned from wasted and unused land into forests, agricultural fields, and other productive uses.

[HTTP://STOPCLIMATECHANGE.NET/](http://STOPCLIMATECHANGE.NET/)

The Greens/EFA in the European Parliament, 2014 • Design : Agence Candide • Illustration : Sabine Allard • Type : AWConqueror by Jean Francois Porchez, Typofonderie • Printed using vegetable inks on recycled paper by a certified printer



STOP CLIMATE CHANGE
PLAY YOUR PART

THIS IS NOT THE BIGGER PICTURE



STOP CLIMATE CHANGE
PLAY YOUR PART



The Greens | EFA
in the European Parliament

Climate change is real - not surreal !

For every degree increase in temperature, an additional 7 % of the world's population will see a decline in water resources of 20 %.

According to the UN, 783 million people do not have access to clean water and almost 2.5 billion do not have access to adequate sanitation and 6 to 8 million people die annually from the consequences of disasters and water-related diseases. Between 1991 and 2000 over 665,000 people died in 2,557 natural disasters of which 90 % were due to water contamination.

[HTTP://STOPCLIMATECHANGE.NET/](http://STOPCLIMATECHANGE.NET/)

The Greens/EFA in the European Parliament • Printed using vegetable inks on recycled paper by a certified printer
Porchez, Typofondere • Design : Agence Candide • Illustration : Sabine Allard • Type : AWconqueror by Jean Francois



The Greens | European Free Alliance
in the European Parliament



STOP CLIMATE CHANGE
PLAY YOUR PART



THIS IS NOT THE BIGGER PICTURE



STOP CLIMATE CHANGE
PLAY YOUR PART



Climate change is real - not surreal !

Climate change will exacerbate already-existing health problems throughout the 21st century, and humans will be more likely to die from wildfires, heat waves, lack of food in impoverished areas and disease vectors like mosquitoes, which are already expanding their ranges.

According to the World Health Organisation, the cost of damage to health (i.e. excluding costs in health-determining sectors such as agriculture and water and sanitation), is estimated to be between US\$ 2-4 billion/year by 2030.

The Greens/EFA in the European Parliament, 2014 • Design : Agence Candide • Illustration : Sabine Allard • Type : AWConqueror by Jean Francois Porchez, Typofonderie • Printed using vegetable inks on recycled paper by a certified printer



[HTTP://STOPCLIMATECHANGE.NET/](http://STOPCLIMATECHANGE.NET/)



The Greens | European Free Alliance
in the European Parliament



STOP CLIMATE CHANGE
PLAY YOUR PART

THIS IS NOT THE BIGGER PICTURE



STOP CLIMATE CHANGE
PLAY YOUR PART



The Greens | EFA
in the European Parliament

Climate change is real - not surreal !

Animal and plant species are shifting their ranges and seasonal activities in response to warming temperatures.

According to the IPCC* report from Working group II on climate impacts, a "large fraction" of land and freshwater species face increased risk of extinction at projected rates of warming.

* Intergovernmental Panel on Climate Change

[HTTP://STOPCLIMATECHANGE.NET/](http://STOPCLIMATECHANGE.NET/)

The Greens/EFA in the European Parliament, 2014 • Design : Agence Candide • Illustration : Sabine Allard • Type : AWConqueroor by Jean Francois Porchez, Typofonderie • Printed using vegetable inks on recycled paper by a certified printer



The Greens | European Free Alliance
in the European Parliament



STOP CLIMATE CHANGE
PLAY YOUR PART

THIS IS NOT THE BIGGER PICTURE



STOP CLIMATE CHANGE
PLAY YOUR PART

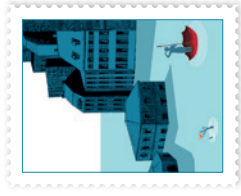


Climate change is real - not surreal !

Urban centres are at risk from some of the worst realities of climate change, including heat waves, flooding, and sea level rise, extreme weather and drought. We're currently in the midst of the most massive urban transition the world has ever seen. According to UN figures, cities are projected to add 274,000 people every day over the next 30 years. By 2040, the urban population will be more than 2 billion higher than today (Cities already account for 70 % of global greenhouse gas emissions, and some cities already lose 10 percent of their GDP to congestion alone).

[HTTP://STOPCLIMATECHANGE.NET/](http://STOPCLIMATECHANGE.NET/)

© The Greens/EFA in the European Parliament • Printed using vegetable inks on recycled paper by a certified printer
Porchez, Typofonderie • Design : Agence Candide • Illustration : Sabine Allard • Type : AWConqueror by Jean Francois



STOP CLIMATE CHANGE
PLAY YOUR PART

THIS IS NOT THE BIGGER PICTURE



STOP CLIMATE CHANGE
PLAY YOUR PART



Climate change is real - not surreal !

Agricultural output could drop 2 % each decade while the demand for food is expected to rise 14 % each decade during that time, exacerbating the food supply issue.

The IPCC* report from Working Group II predicts that food production will decrease by up to 2 % each decade for the rest of the 21st century, while global food demand is projected to rise by as much as 14 % each decade, as the world's population swells to a projected 9.6 billion in 2050.

* Intergovernmental Panel on Climate Change

[HTTP://STOPCLIMATECHANGE.NET/](http://STOPCLIMATECHANGE.NET/)

The Greens/EFA in the European Parliament, 2014 • Design : Agence Candide • Illustration : Sabine Allard • Type : AWConqueror by Jean Francois Porchez, Typofonderie • Printed using vegetable inks on recycled paper by a certified printer



The Greens | European Free Alliance
in the European Parliament



STOP CLIMATE CHANGE
PLAY YOUR PART